

Geographic Information Specialists

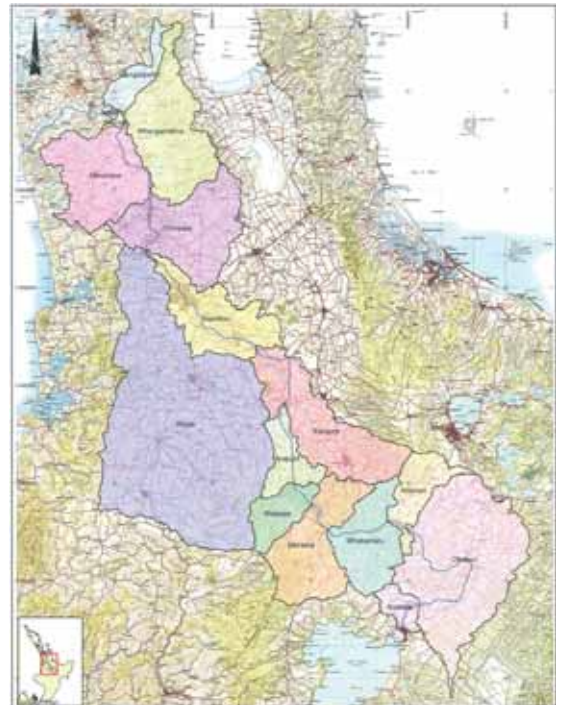
Tonkin & Taylor provides accurate, high quality geographic information services. Geographic (spatial) information systems (GIS) are an important tool available to our specialised consultants. We use GIS to understand, analyse and model environmental processes, which provides cost effective benefits to projects of all scales.

Project

- Waikato River catchment sanitary inspections
- Sediment contamination surveys
- Digital shoreline analysis for coastal hazard assessments.
- Coastal hazard analysis and delineation
- Risk assessments.

GIS services provided

- Data capture and quality assurance
- Geo-database management
- Image processing and rectification
- 3D mapping and analysis
- Environmental spatial analysis
- High quality mapping and overlay production
- Visualisation and output of data utilising Google Earth and NASA World Wind.



www.tonkin.co.nz

