

## Lake Hood Extension - Water Quality

### Client

Lake Hood Extension Project Joint Venture.

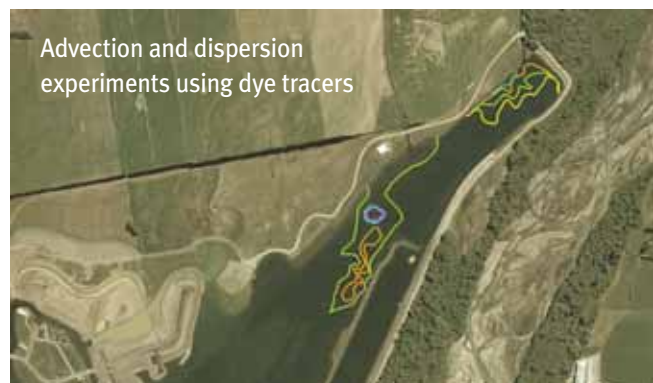
### Project

Lake Hood is an 84 ha man-made recreational lake located near Ashburton, Canterbury. In order to meet increased demand on the lake, the client proposed to extend the lake by 94 ha and improve and increase the associated recreational and residential facilities.

Tonkin & Taylor were appointed to evaluate the effects of the lake extension on water quality. In addition to the Assessment of Environmental Effects (AEE), the study identified design and management options to improve lake water quality and the aesthetic appeal of the lake.

### Services provided

- Flow and water quality monitoring of streams, lake and groundwater
- Water quality assessment of existing lake including fish and didymo
- Nutrient budget of existing and proposed lake
- Water balance of existing and proposed lake
- Groundwater modelling
- Lake water quality modelling
- Trophic status assessment of existing and proposed lake
- Management and design options to improve water quality and trophic status of proposed lake
- Wetland design
- Lake outlet design.



[www.tonkin.co.nz](http://www.tonkin.co.nz)

