

## Rodney Inundation Study

### Client

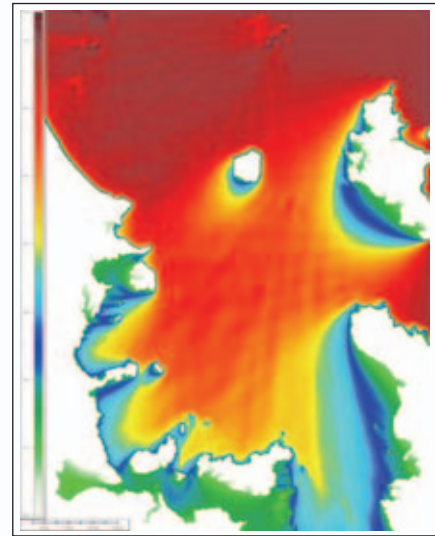
Rodney District Council.

### Project

Coastal inundation including climate change effects is crucial for council management and planning of development. Offshore extreme wave climate was modelled using the numerical package SWAN and the resulting extreme water levels were assessed for 1% and 2% Annual Exceedance Probability events at 20 development areas between Pakiri and Karepiro Bay. The results of the study assisted Rodney District Council in setting building floor levels for future coastal developments.

### Services provided

- Project scoping
- Bathymetric assessment
- Extreme value analysis
- Climate change assessment
- SWAN numerical wave modelling
- Extreme water level assessment.



[www.tonkin.co.nz](http://www.tonkin.co.nz)

