

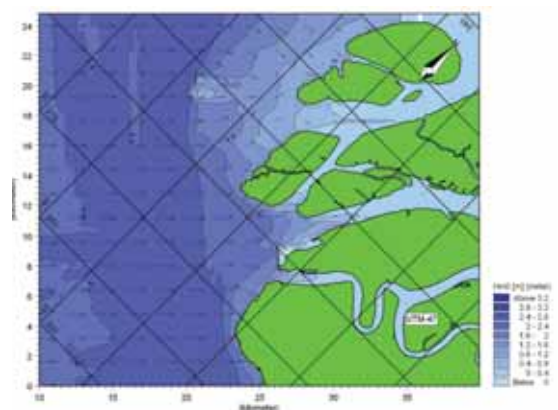
West Port Wharf and Port extension, Malaysia

Client

Environment Asia Sdn Bhd on behalf of Port Klang Authority Sbn Bhd.

Project

Detailed design and assessment of environmental effects for a 4 km port and wharf extension at West Port within Port Klang, Malaysia. The project includes the construction of eight new container terminals, reclamation of low-lying land and capital dredging. The project site is located in the Klang river delta, an area of high sedimentation. Due to the location and scale of the development a detailed assessment of existing processes and potential physical effects was required.



Services provided

- Project scoping
- Site investigation works
- Preliminary design
- Detailed field investigations
- Coastal process assessment
- Mike21 2D hydrodynamic, sediment and wave modelling
- Assessment of physical effects.

www.tonkin.co.nz

